

NOTE: (A) = NEW DRY CHEMICAL FIRE EXTINGUISHER. GENERAL CONTRACTOR TO INSTALL ONE KIDDE 10 lb #46620420 AT BATTERY CHARGING AND KIDDE 5 lb #FC-340M-VB AT ALL OTHER LOCATIONS. INSTALL EITHER ON WALL SURFACE, FIXTURE UPRIGHT OR ALUMINUM MULLION. MOUNTING HEIGHT = 3'-6" ABOVE FINISHED FLOOR TO TOP OF EXTINGUISHER.

1/8" = 1'-0"

FLOOR PLAN

- REFER TO STRUCTURAL DRAWINGS FOR ALL DETAILS AND REQUIREMENTS REGARDING FOUNDATIONS, WALL REINFORCING, BOND BEAMS, LINTELS, AND ROOF FRAMING.
- REFER TO CIVIL DRAWINGS FOR LOCATIONS AND DETAILS OF SIDEWALKS, PIPE GUARDS, ETC., AS WELL AS FINISH FLOOR ELEVATION AND EXTERIOR FINISHED GRADES AROUND THE BUILDING.
- INSTALL 6" WIDE, 20 GAUGE GALVANIZED SHEET METAL STRIP BETWEEN THE BACK OF THE GYPSUM BOARD AND THE FACE OF THE METAL STUD AROUND THE ENTIRE PERIMETER OF THE BUILDING, AS WELL AS BOTH SIDES OF THE CURTAIN WALL. TOP OF STRIP TO BE 93" ABOVE FINISHED FLOOR. REFER TO SHEET A-4 FOR DETAILS OF CURTAIN WALL.
- SEE SHEET M-2 FOR LOCATION OF NON FREEZE YARD HYDRANT AND INSTALLATION REQUIREMENTS.
- INSTALL 1/2" X 4'-0" X 8'-0" AC PLYWOOD HORIZONTALLY WITH THE LONG EDGE ON THE FLOOR AND THE END JOINT CENTERING ON A STUD. APPLY PLYWOOD TO THE METAL STUDS WITH SCREWS TO FACILITATE FUTURE REPLACEMENT. PROVIDE "J" MOLD WHERE PLYWOOD AND GYPSUM BOARD MEET. SEE INTERIOR ELEVATIONS SEE 3/A4 DETAIL.
- INSTALL TWO 4' X 8' SHEETS OF BLACK FRP VERTICALLY BEHIND BATTERY RACK. SEE SECTION 09986 OF THE SPECIFICATIONS AND INTERIOR ELEVATIONS ON SHEET A-4.
- SEE SPECIFICATIONS FOR INFORMATION ON ITEMS NOT COMPLETELY DELINEATED ON THE DRAWINGS.

FLOOR PLAN NOTES

LOCATION	FLOOR	BASE	WALLS	CLG.	REM.
	SEALED CONCRETE	VINYL TILE	VINYL	QUARRY TILE	GYPSUM BOARD FIBER REINFORCED PANELS METAL DECK GYPSUM BOARD
SALES AREA	●	●	●	●	
REST ROOMS	●	●	●	●	

3/16" = 1'-0"

ROOM FINISH SCHEDULE

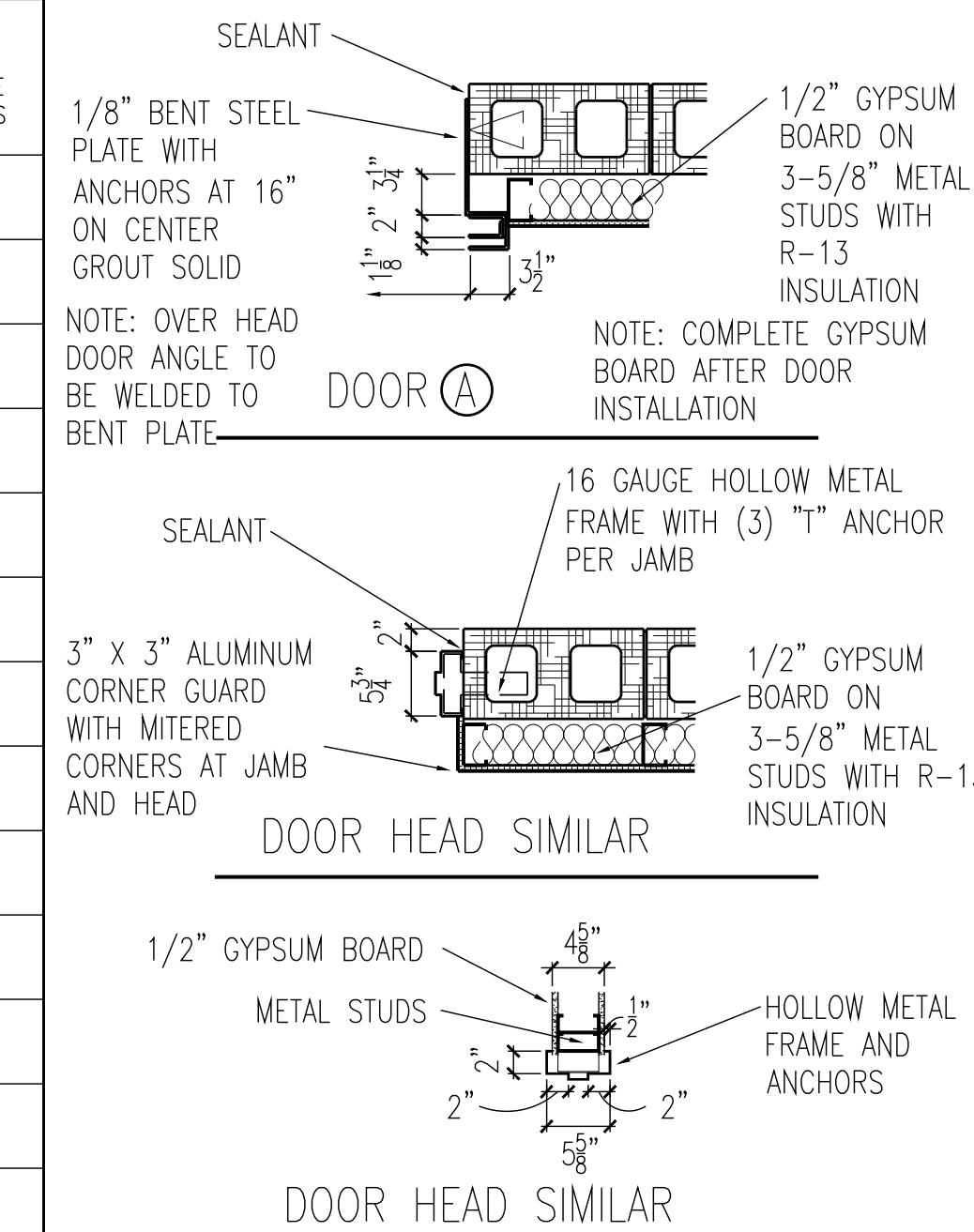
MK	SIZE	TYPE	FRAME	JAMB DETAIL	HEAD DETAIL	ADA / EXIT HARDWARE
A	6'-0" x 8'-0"	STEEL OVERHEAD ROLL-UP	STEEL ANGLE	6:7&8/A1	6&7/A1	
B	3'-0" x 7'-0"	HOLLOW METAL	HOLLOW METAL	8/A1	8/A1	PUSH BAR EXIT DEVICE WILL HAVE AN INTEGRAL SOUNDER
C	3'-0" x 6'-8" x 1-3/4"	SOLID CORE WOOD UNDERCUT DOOR 1"	HOLLOW METAL	8/A1	8/A1	LEVER HANDLE PRIVACY SETS
D	3'-0" x 6'-8" x 1-3/4"	SOLID CORE WOOD UNDERCUT DOOR 1"	HOLLOW METAL	8/A1	8/A1	LEVER HANDLE PRIVACY SETS
E	2'-6" x 6'-8" x 1-3/4"	SOLID CORE WOOD PAIR REQUIRED	HOLLOW METAL	8/A1	8/A1	UNDERCUT DOOR 1" (PAIR REQUIRED)
G	3'-0" x 7'-0" x 1-3/4"	GLASS & ALUMINUM SEE SHEET A-5	ALUMINUM		SEE MANUFACTURER'S SHOP DRAWINGS	
H	3'-0" x 7'-0" x 1-3/4"	GLASS & ALUMINUM SEE SHEET A-5	ALUMINUM		SEE MANUFACTURER'S SHOP DRAWINGS	
J	3'-0" x 7'-0" x 1-3/4"	HOLLOW METAL	HOLLOW METAL	8/A1	8/A1	PUSH BAR EXIT DEVICE
K	3'-0" x 7'-0" x 1-3/4"	HOLLOW METAL	HOLLOW METAL	8/A1	8/A1	PUSH BAR EXIT DEVICE

3/32" = 1'-0"

DOOR SCHEDULE - HOLLOW METAL DOORS & FRAMES

7N2L-A1

OVERHEAD DELIVERY DOOR (A)

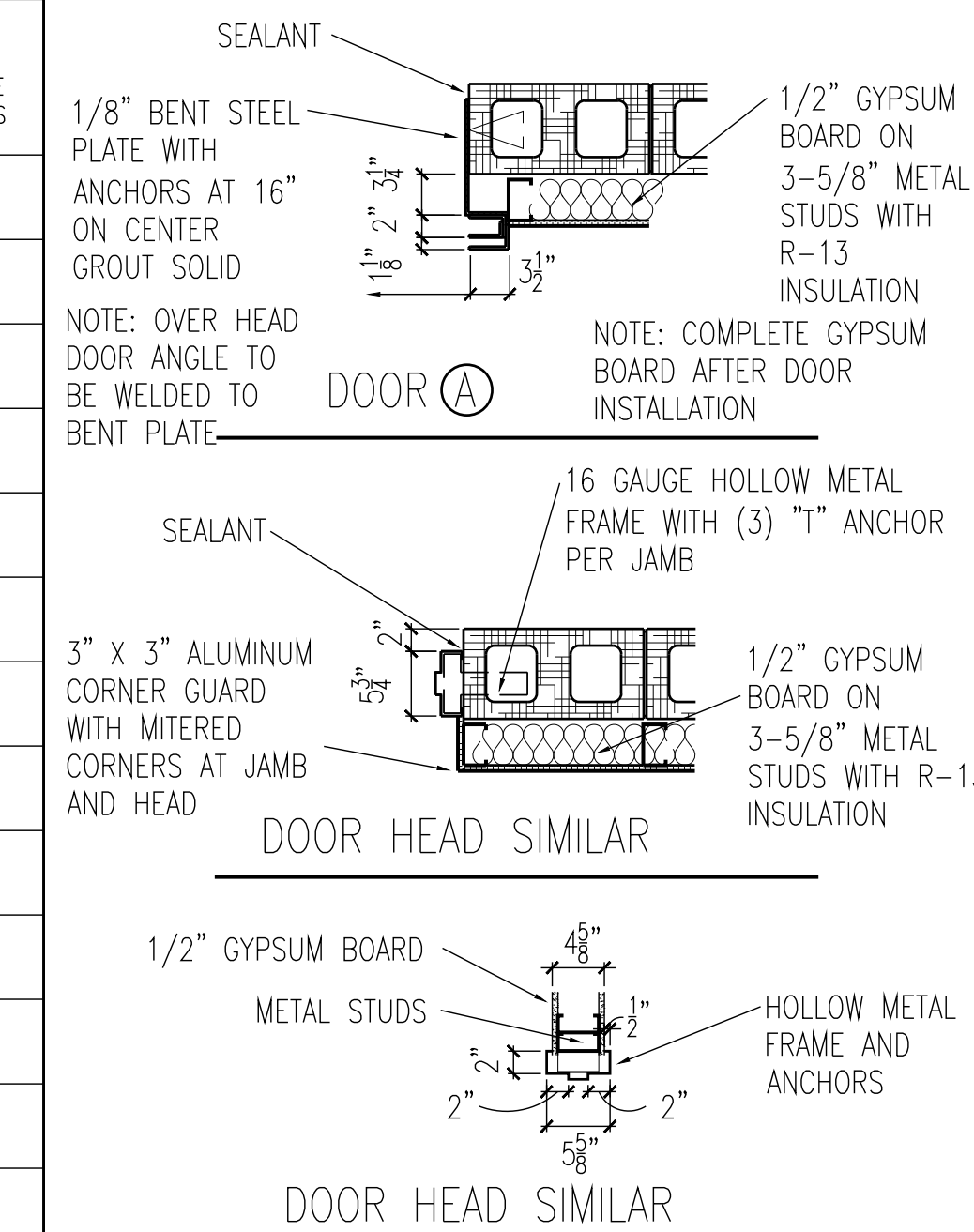


3/4" = 1'-0"

JAMB DETAILS

7N2L-A1

OVERHEAD DOOR ELEVATION

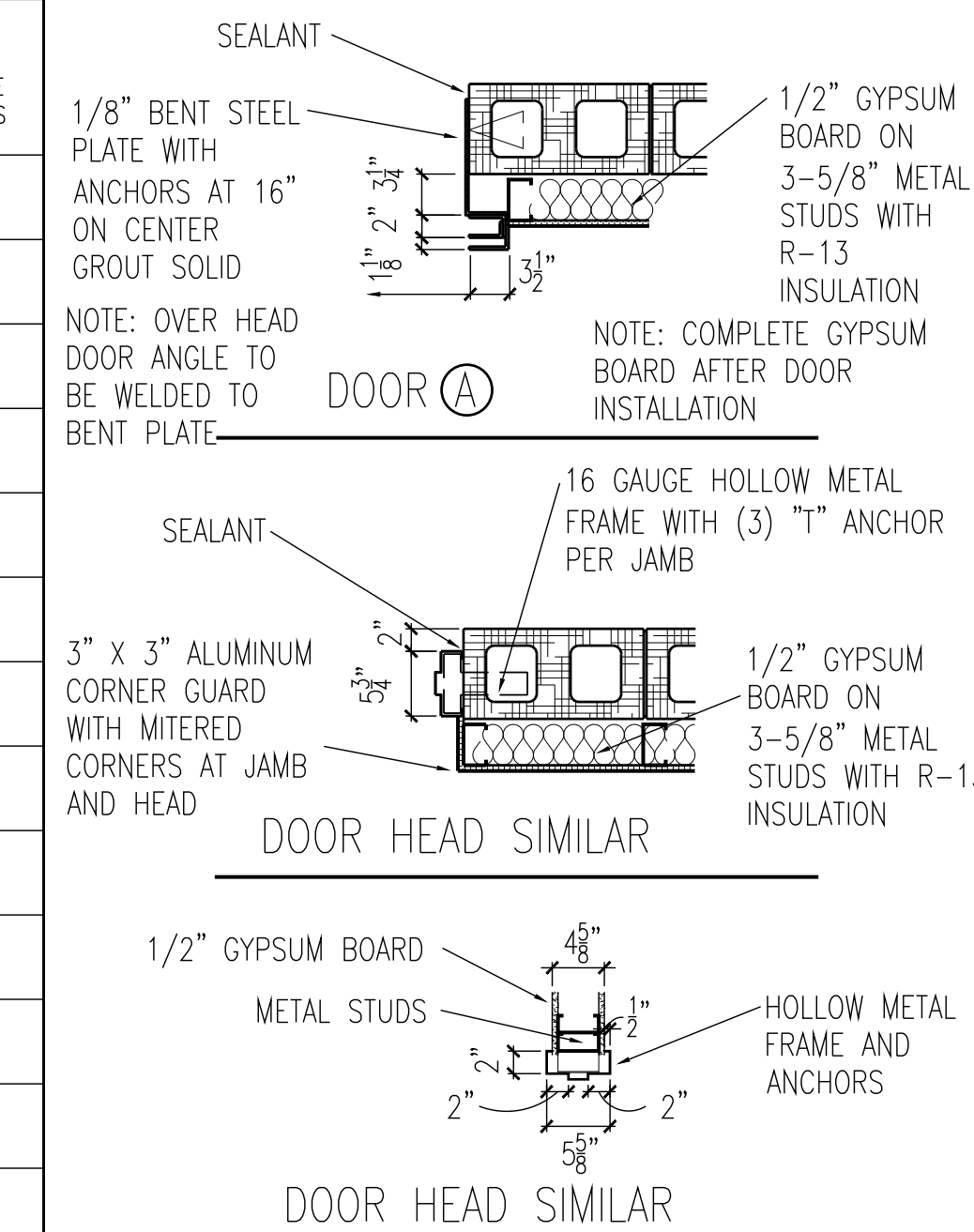


3/4" = 1'-0"

EXPANSION JOINT DETAIL

3/4" = 1'-0"

SECTION AT CANOPY

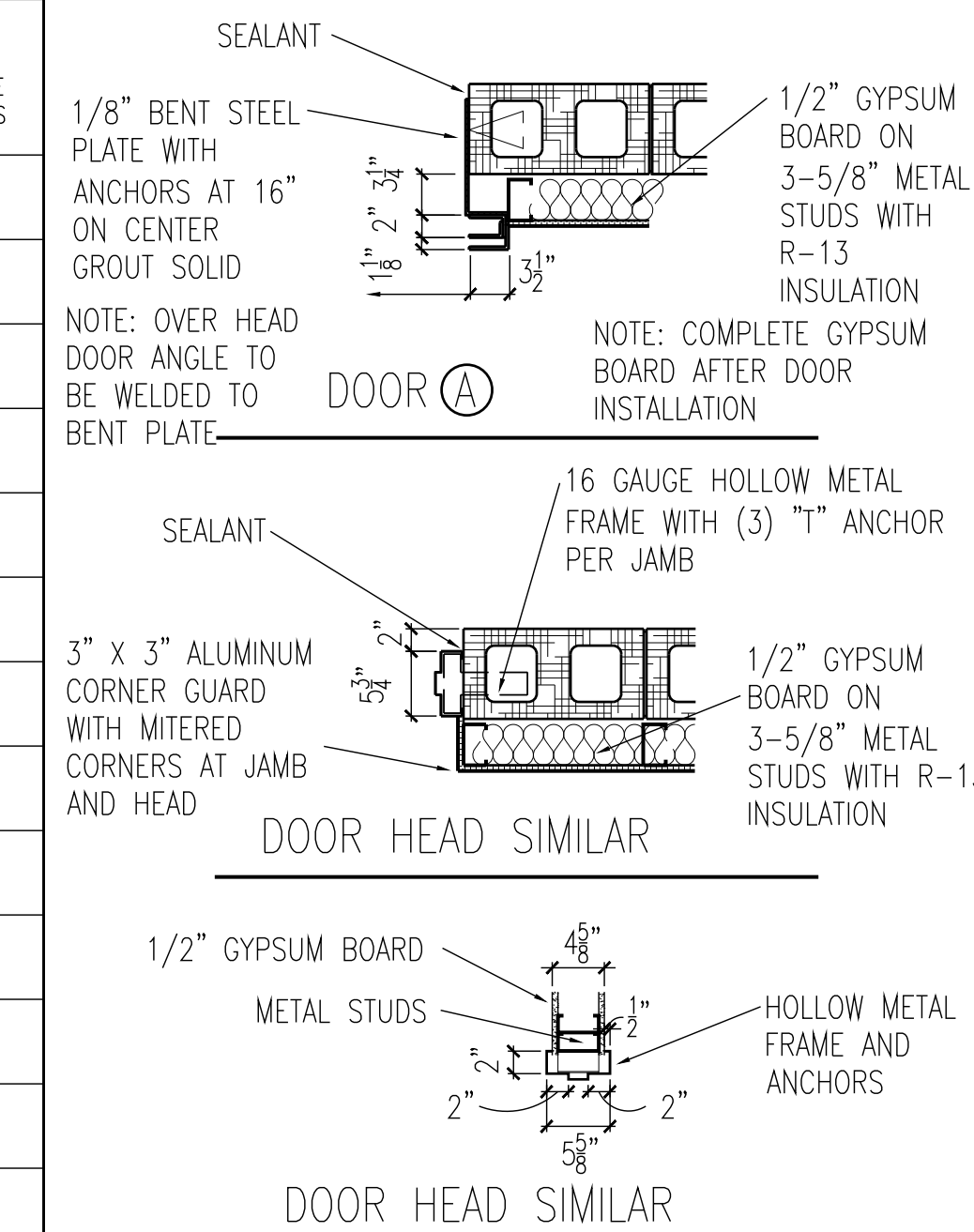


3/4" = 1'-0"

SECTION AT CANOPY

1/2" = 1'-0"

SECTION AT CANOPY



1/2" = 1'-0"

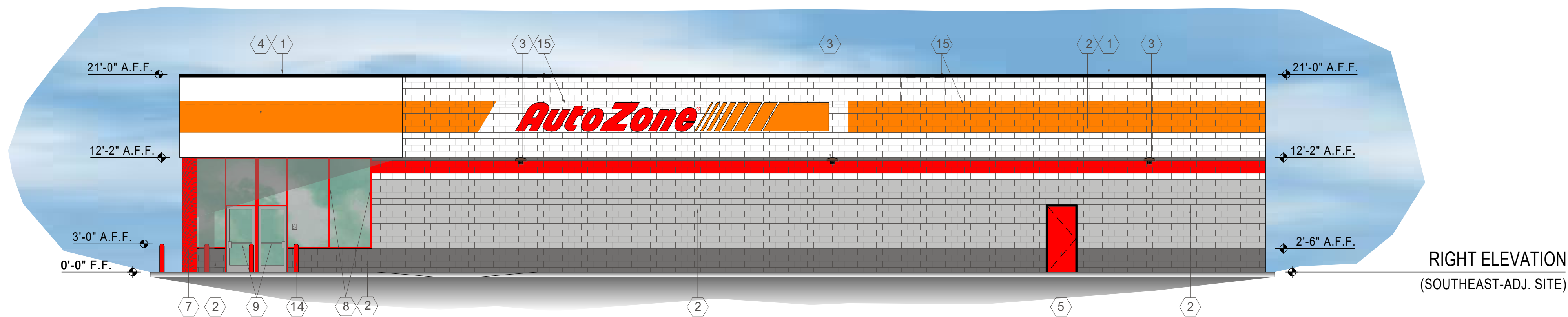
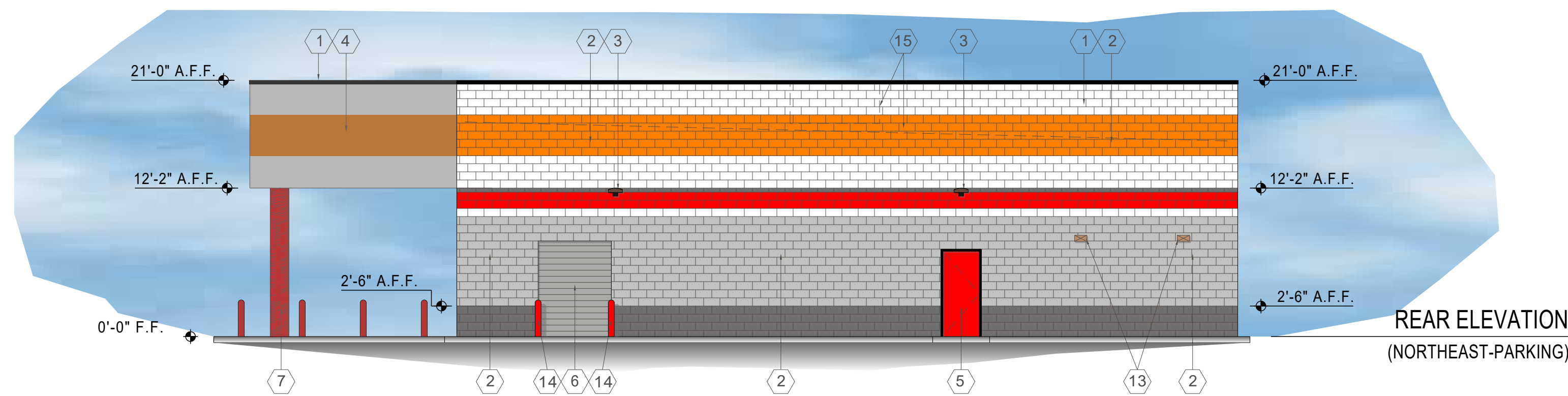
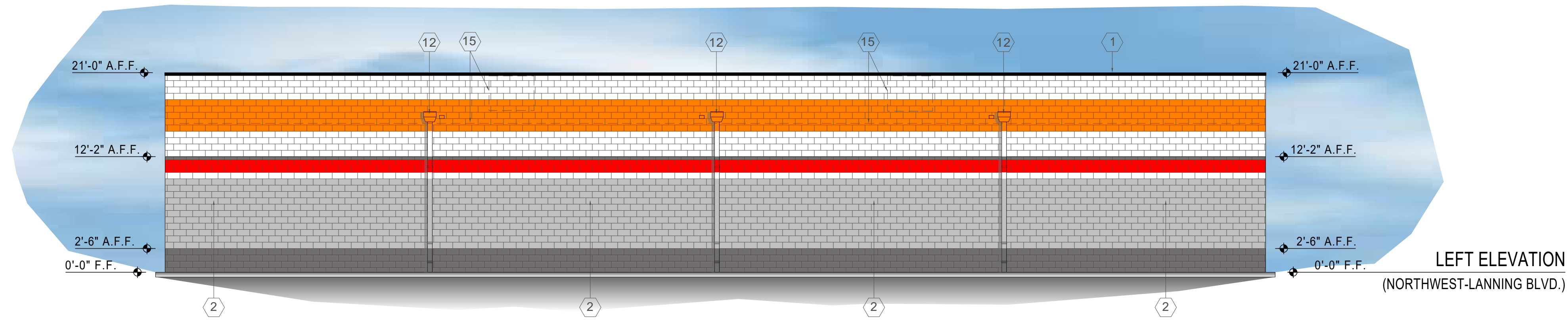
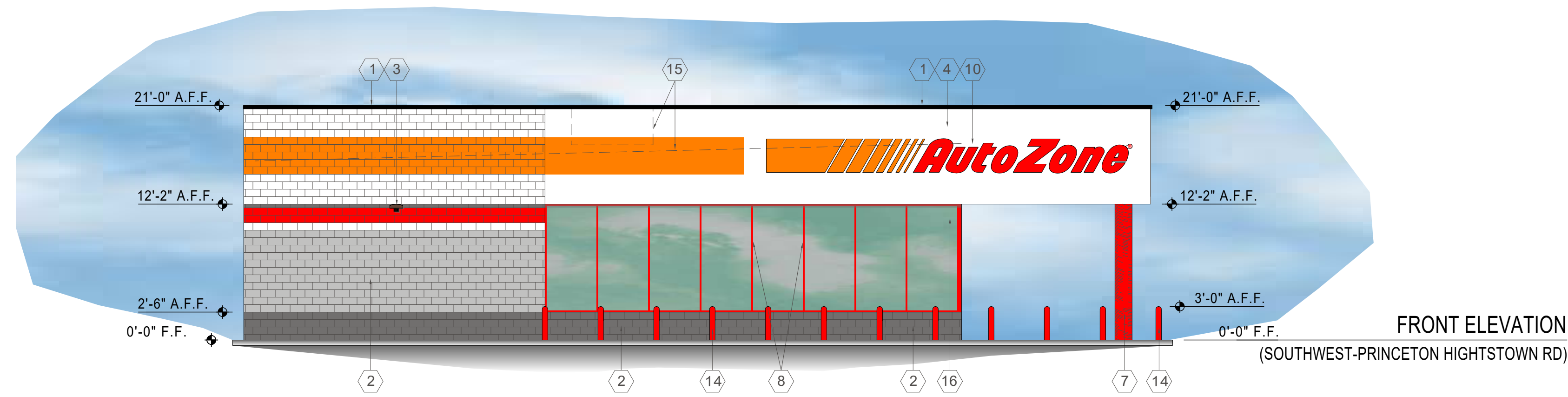
SECTION AT CANOPY

REVISIONS	1	2	3	4	5	6

AutoZone Store No. 3644
50 PRINCETON-HIGHSTOWN RD
TWP EAST WINDSOR NJ 08520
FLOOR PLAN / DOOR SCHEDULE / WALL DETAILS

Architect: Lew Ellis
123 South Front Street
Memphis, Tennessee 38103
TEL: 901-495-6500 FAX: (901) 495-8969
For Bidding & Contractor Information Contact:
Dodge Data & Analytics. Tel. 1-844-326-3826 ext 9429
Cindy.searcy@construction.com

05/02/22
7N2-L
A-1



- 1 TWO PIECE COMPRESSION TRIM COLOR: BLACK
- 2 SMOOTH FACE CONCRETE MASONRY UNITS
- 3 WALL MOUNTED LIGHT FIXTURE COLOR: BRONZE
- 4 EIFS FINISH OVER STOREFRONT
- 5 PAINT MAN DOOR RED & METAL FRAMES BLACK
- 6 DO NOT PAINT OVERHEAD DOOR PAINT ANGLES BLACK
- 7 CORRUGATED COLUMN PAINT RED
- 8 ALUMINUM STOREFRONT - RED KYNAR FINISH
- 9 GLASS AND ALUMINUM DOORS - CLEAR ANODIZED FINISH
- 10 FRONT WALL SIGN - 36" CHANNEL LSTRP
- 11 RIGHT WALL SIGN - 36" CHANNEL RSTRP
- 12 SCUPPERS AND DOWNSPOUTS. PAINT TO MATCH BACK GROUND ADJACENT 4"H. X 6"W. OVERFLOW SCUPPER.
- 13 TOILET WALL VENTS PAINTED
- 14 PIPE GUARD WITH RED SLEEVE
- 15 ROOF LINE / HVAC UNITS - FULL SCREENED BY PARAPET
- 16 STORE ADDRESS - 6" WHITE REFLECTIVE NUMBERS

2 ELEVATION KEY NOTES

REVISIONS	
REV#	DESCRIPTION
1	REV1
2	REV2
3	REV3
4	REV4
5	REV5
6	REV6

AutoZone Store No. 3644
PRINCETON-HIGHTSTOWN RD

TWP OF EAST WINDSORNJ 08520
COLOR EXTERIOR ELEVATIONS & NOTES

Architect: Lew Ellis
123 South Front Street
Memphis, Tennessee 38103
TEL: 901-495-8600 FAX: (901) 495-8969
For Bidding & Contractor Information Contact:
McGraw - Hill Construction Tel. 615-884-1017
www.construction.com

05/02/22

7N2-L

CE1